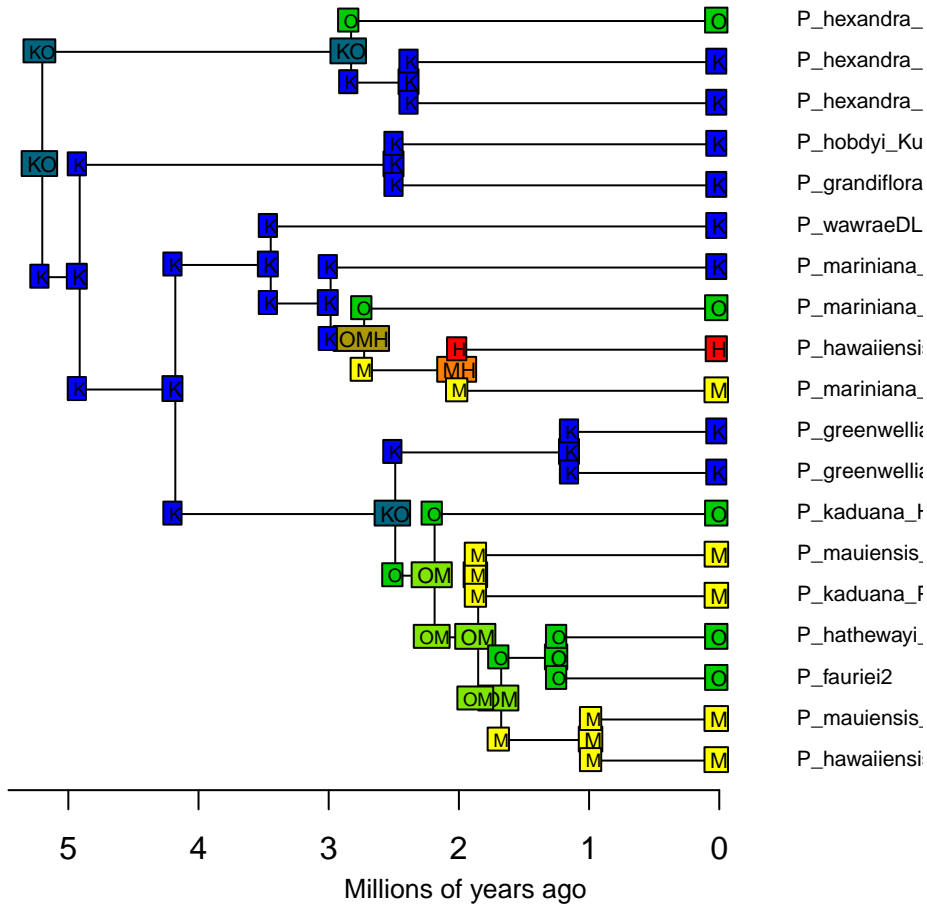
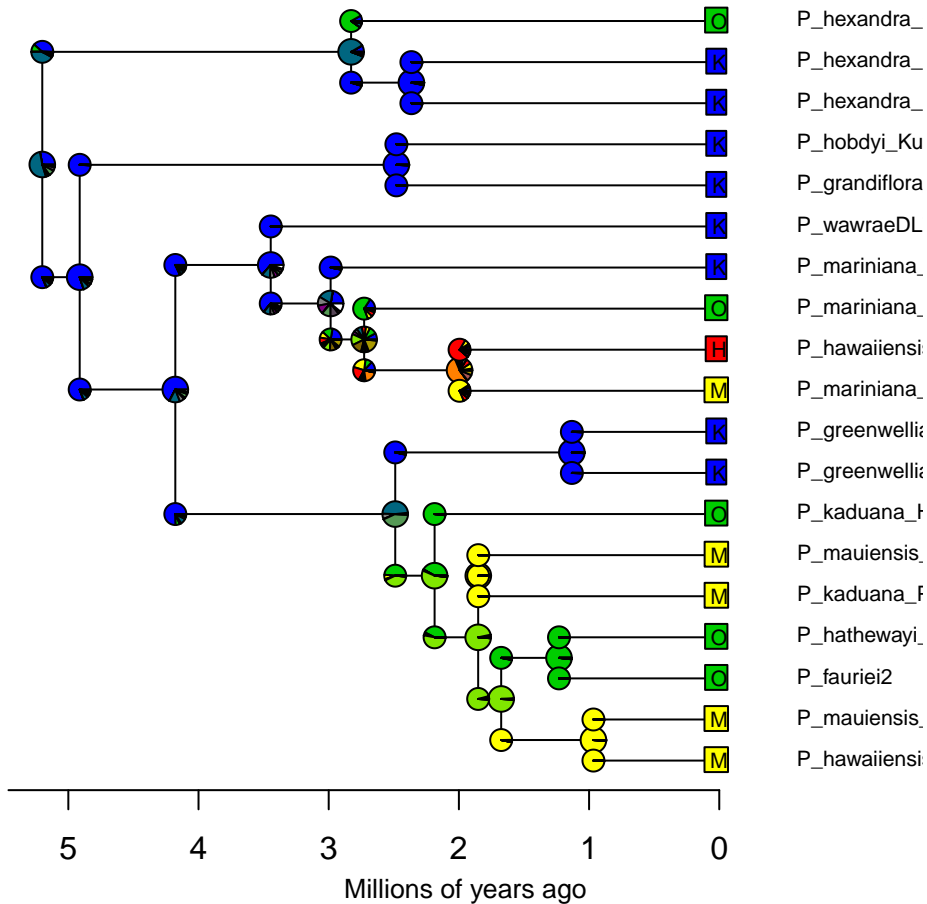


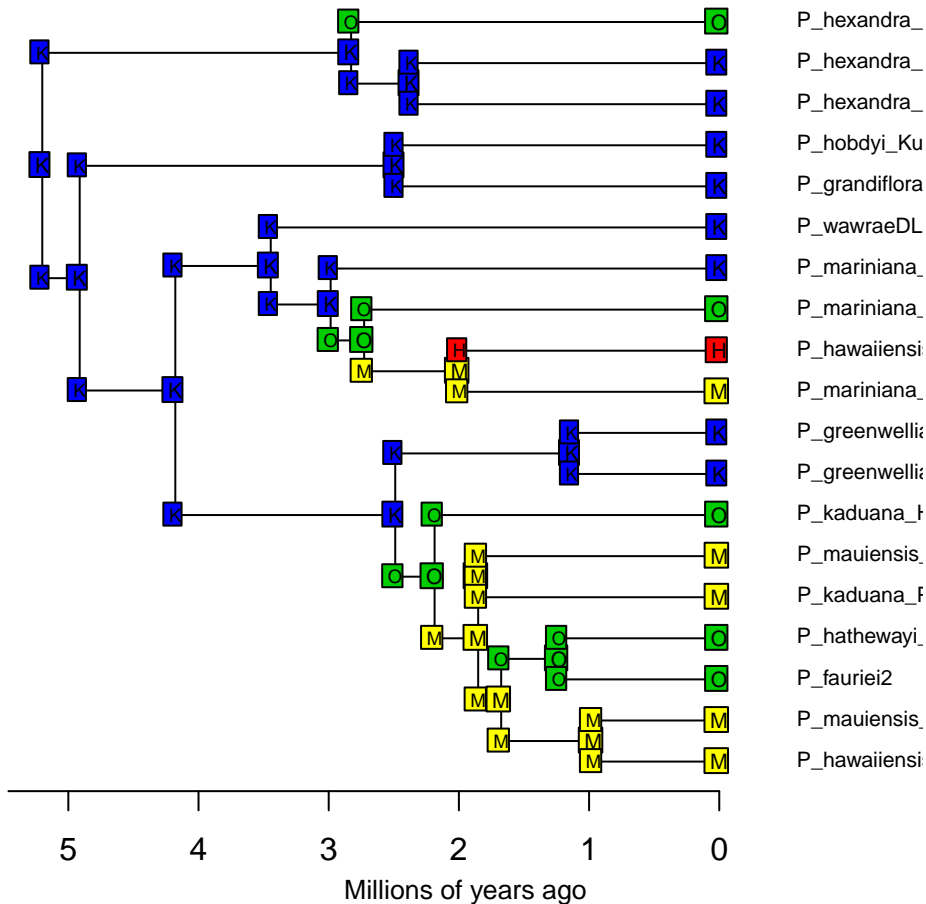
BioGeoBEARS DEC on Psychotria M0_unconstrained
ancstates: global optim, 4 areas max. d=0.0351; e=0.0284; j=0; LnL=-34.54



BioGeoBEARS DEC on Psychotria M0_unconstrained
ancstates: global optim, 4 areas max. d=0.0351; e=0.0284; j=0; LnL=-34.54



BioGeoBEARS DEC+J on Psychotria M0_unconstrained
ancstates: global optim, 4 areas max. d=0; e=0; j=0.1144; LnL=-20.95



BioGeoBEARS DEC+J on Psychotria M0_unconstrained
ancstates: global optim, 4 areas max. d=0; e=0; j=0.1144; LnL=-20.95

