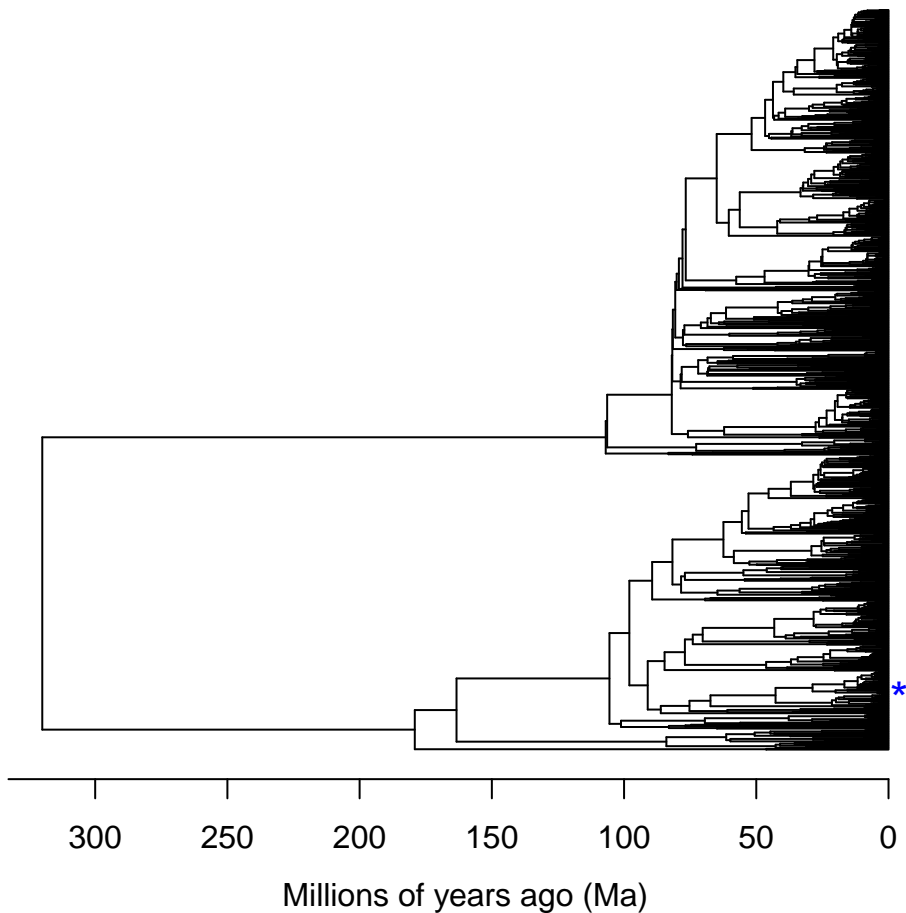
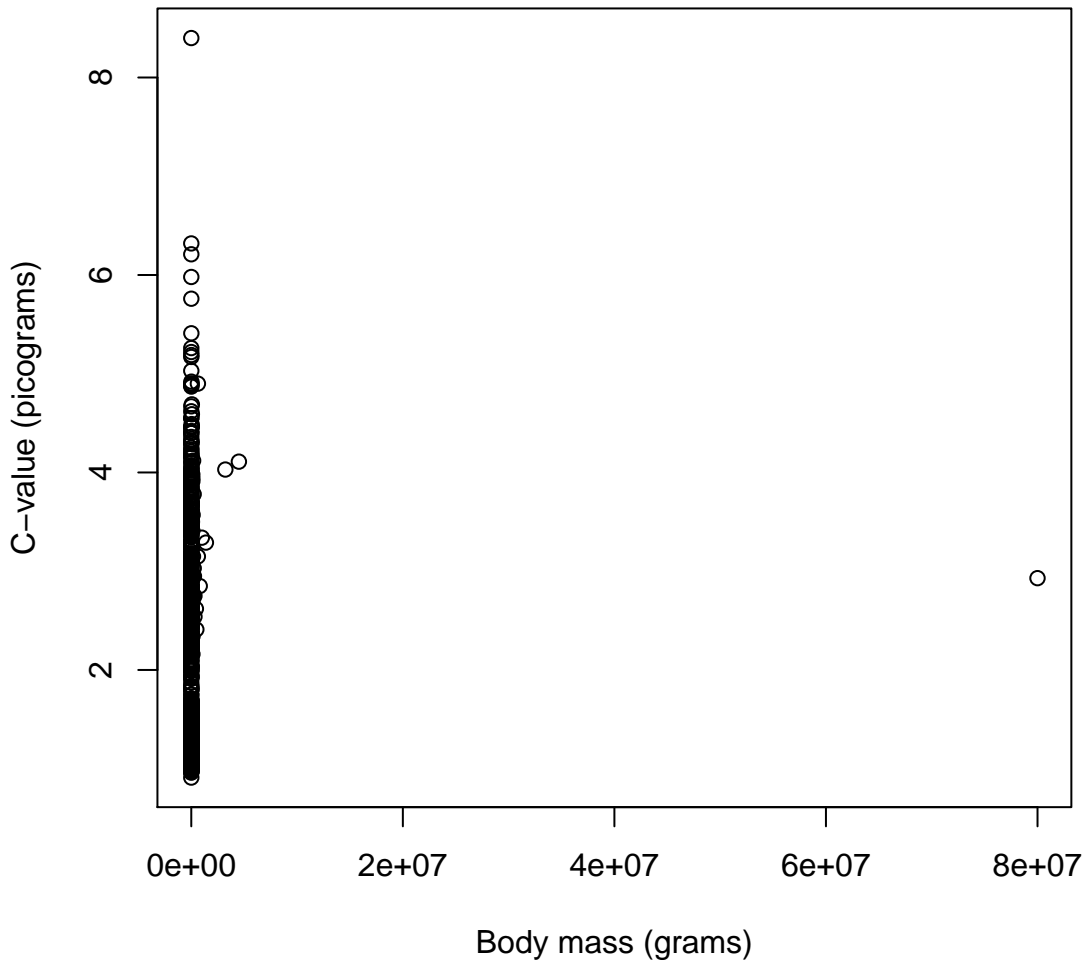


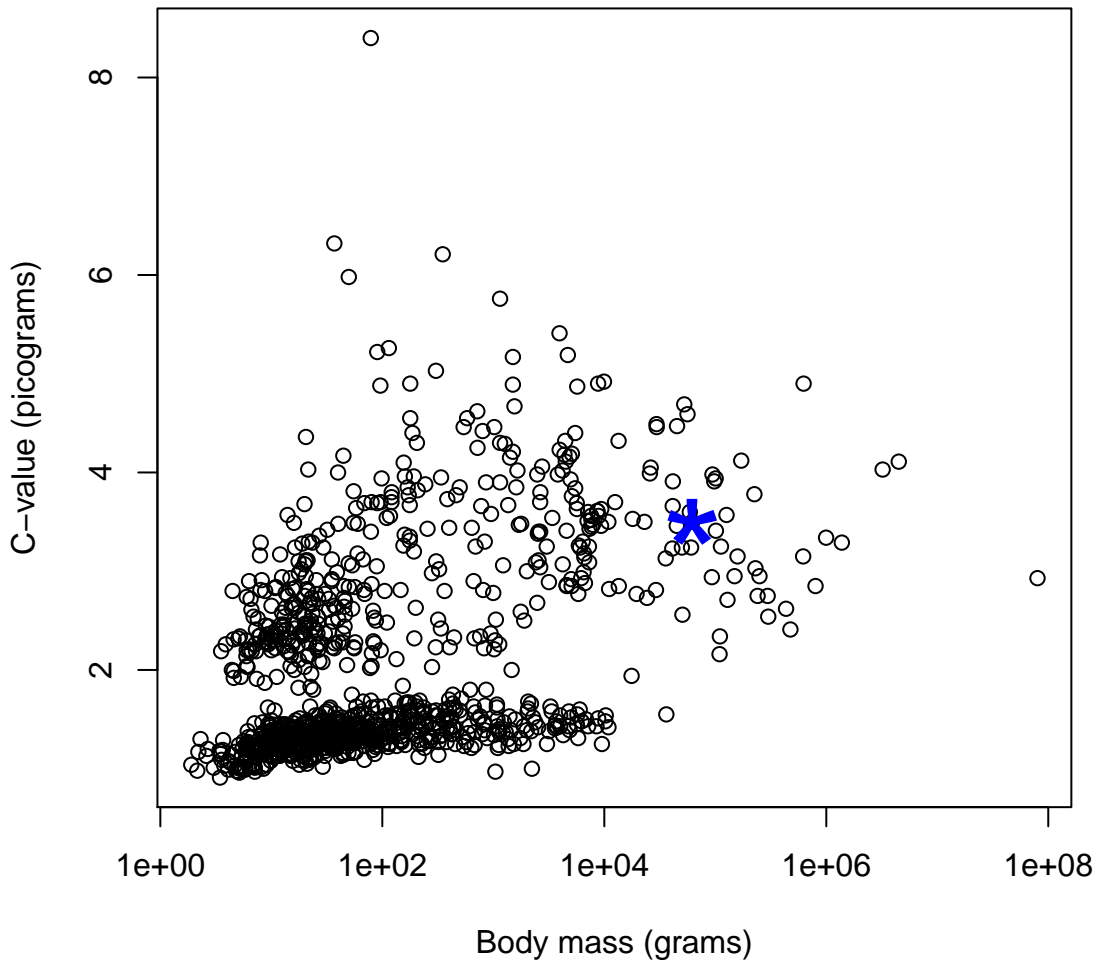
Phylogeny of (selected) birds and mammals



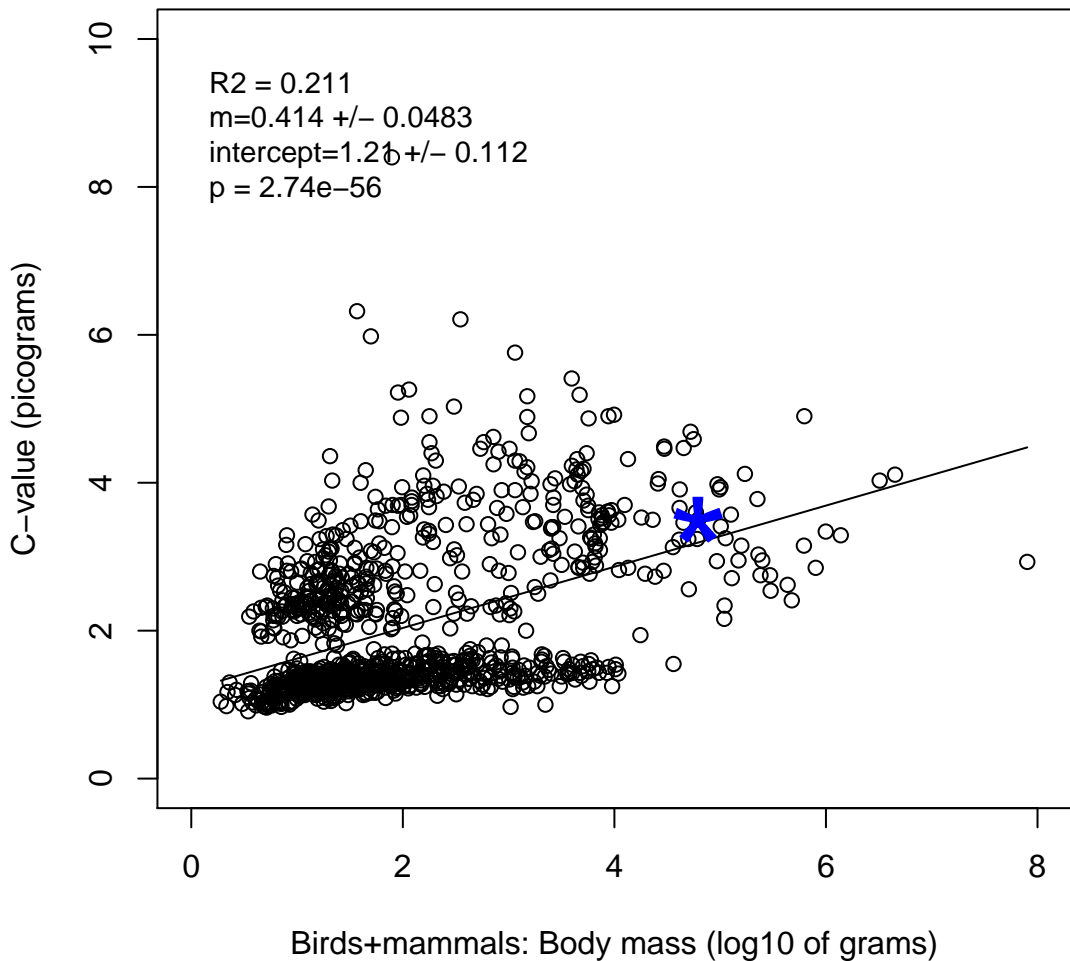
Birds+mammals: Body mass versus genome size



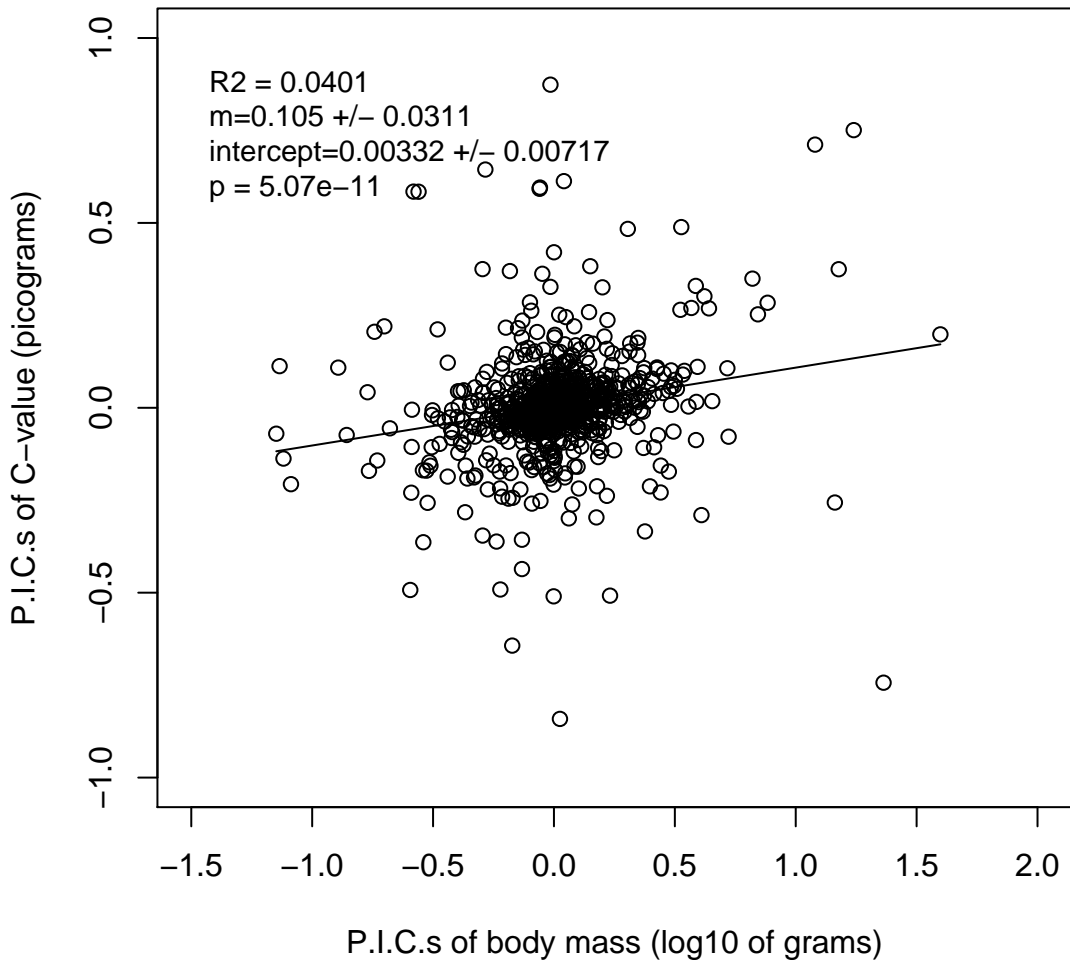
Birds+mammals: Body mass (log-scaled) versus genome size



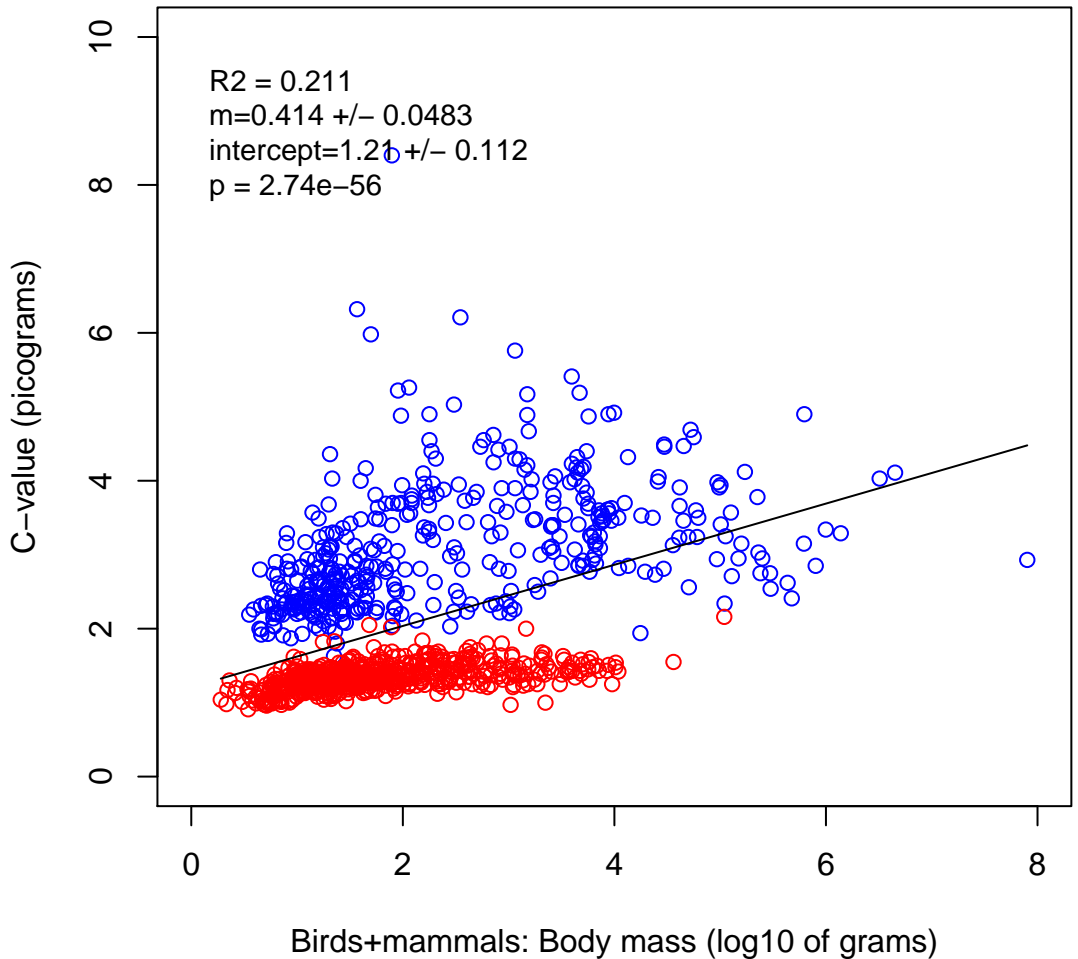
Birds+mammals: Body mass (log-scaled) versus genome size



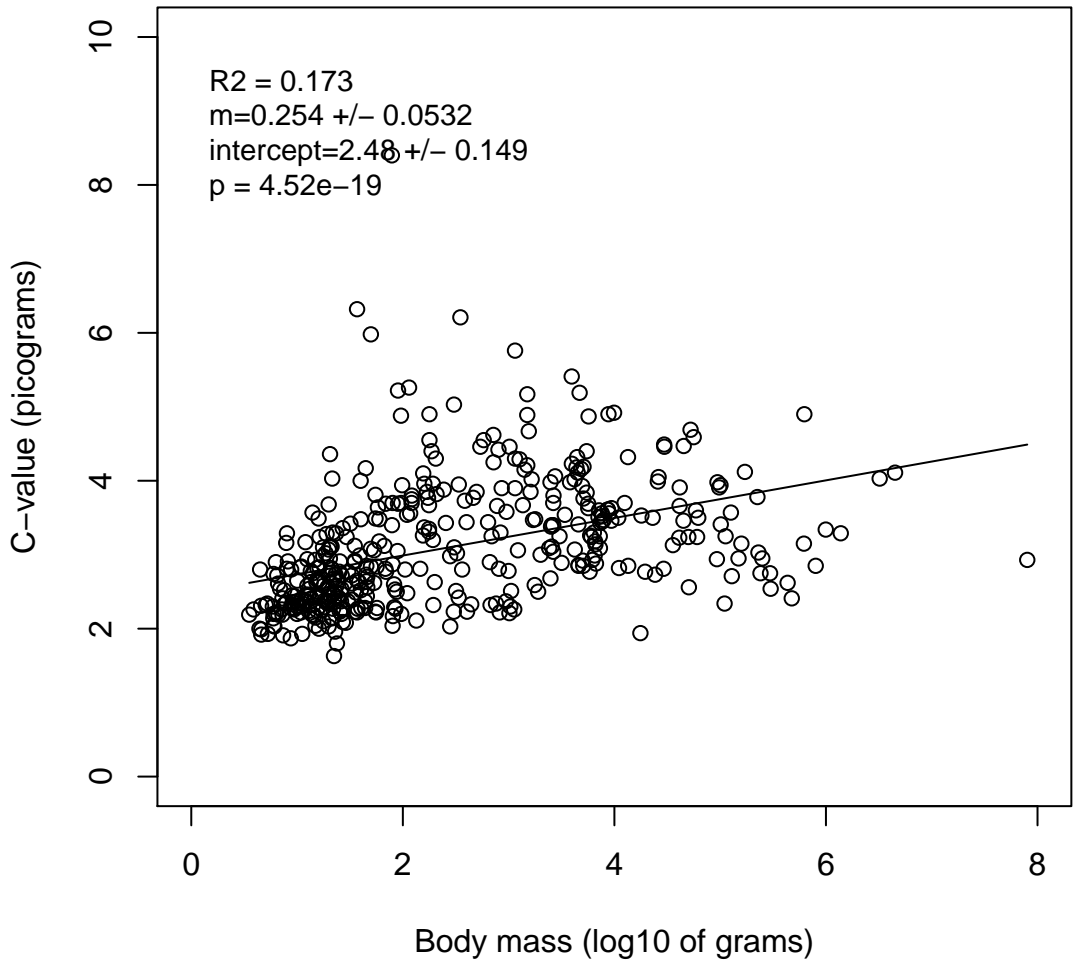
Birds+mammals: PICs of log(body mass) vs. genome size



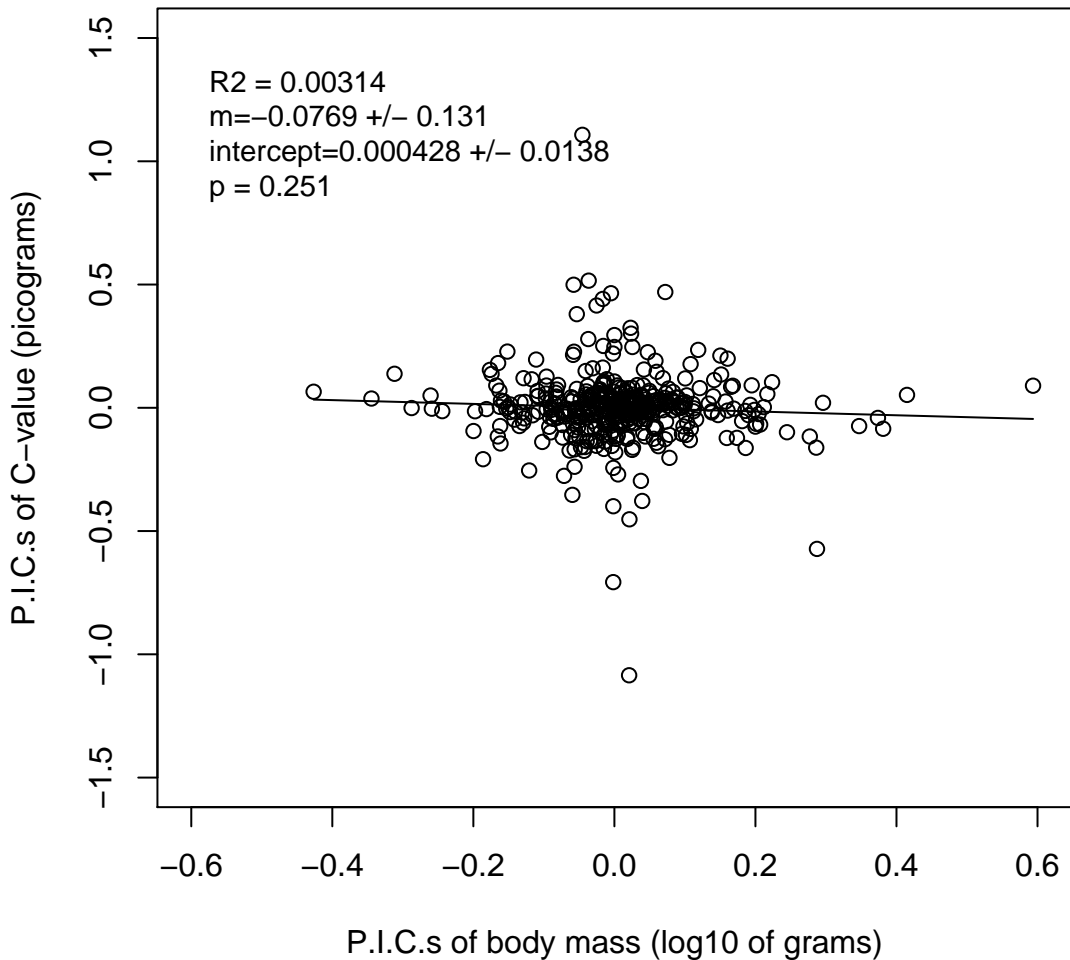
Birds+Mammals: body mass vs. C-value



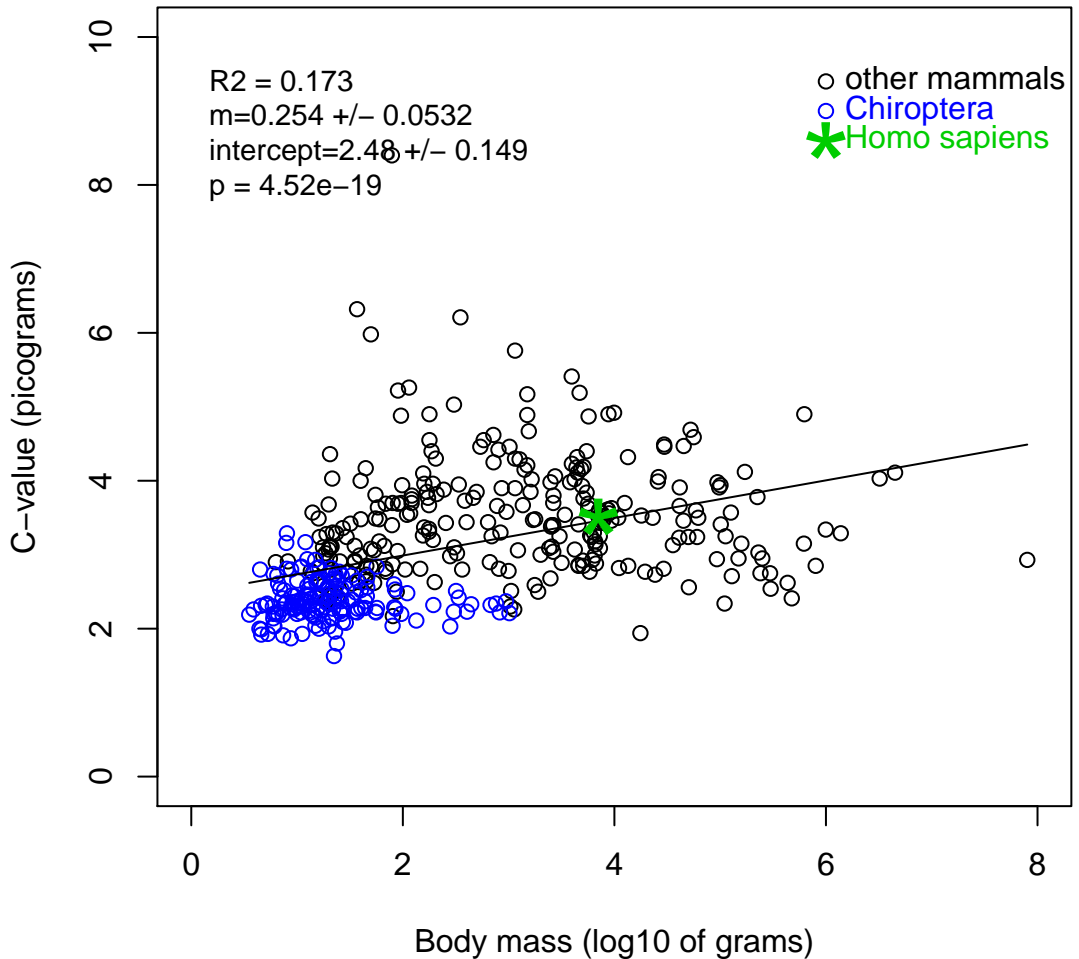
Mammals: body mass vs. C-value



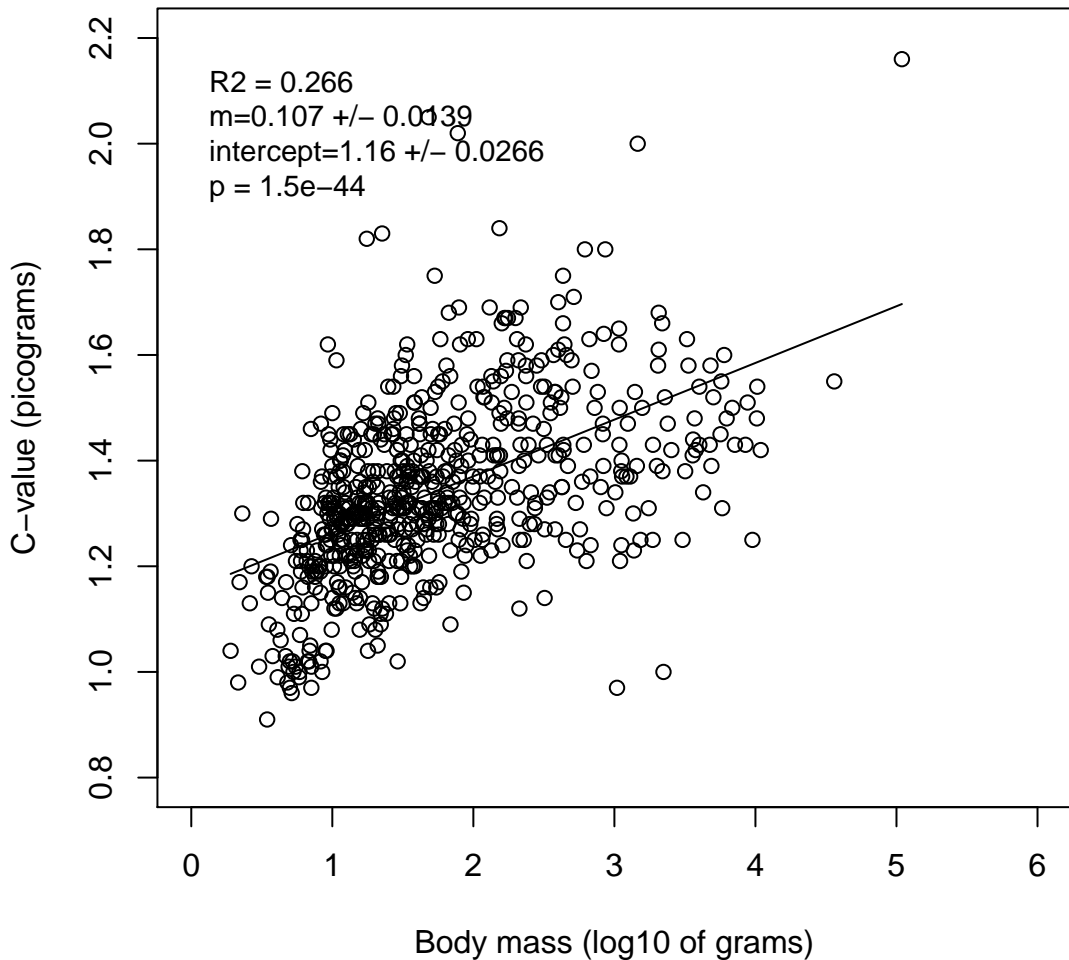
Mammals: body mass contrasts vs. C-value contrasts



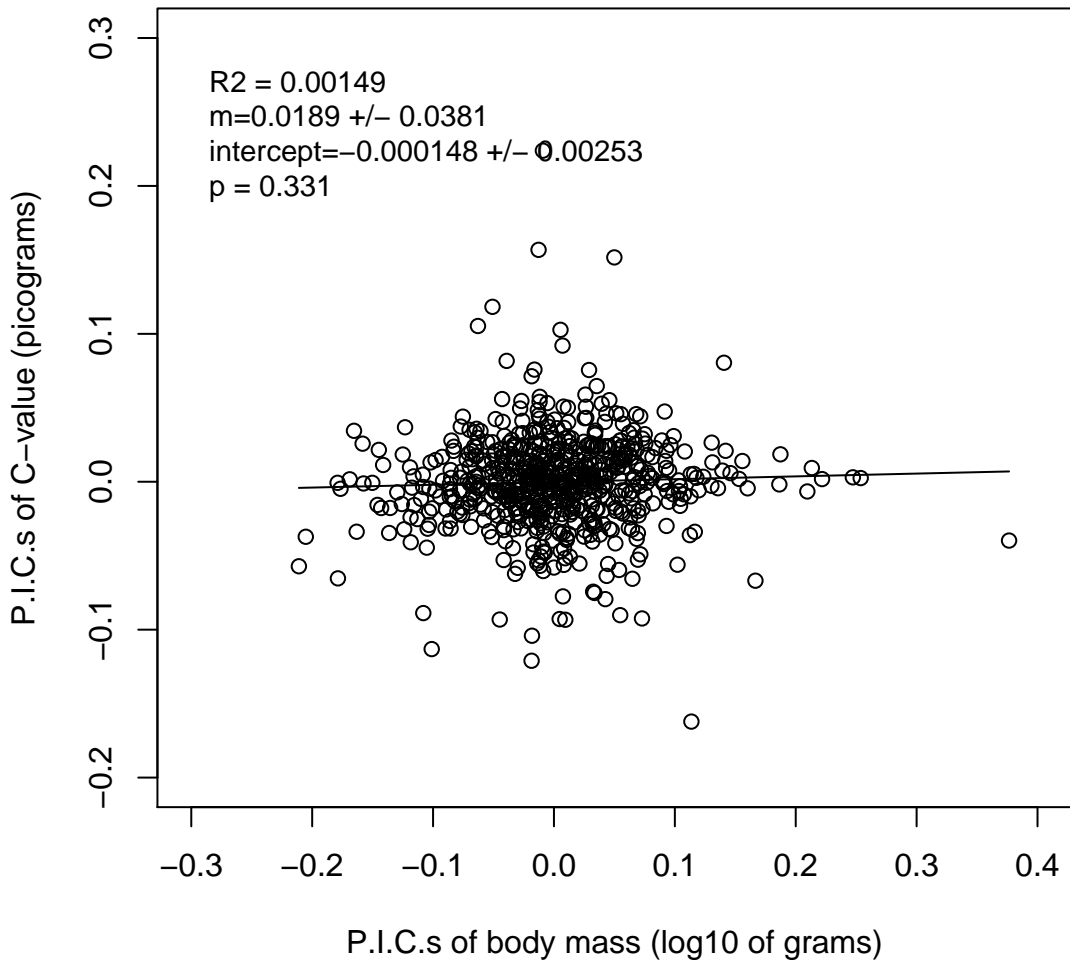
Mammals: body mass vs. C-value



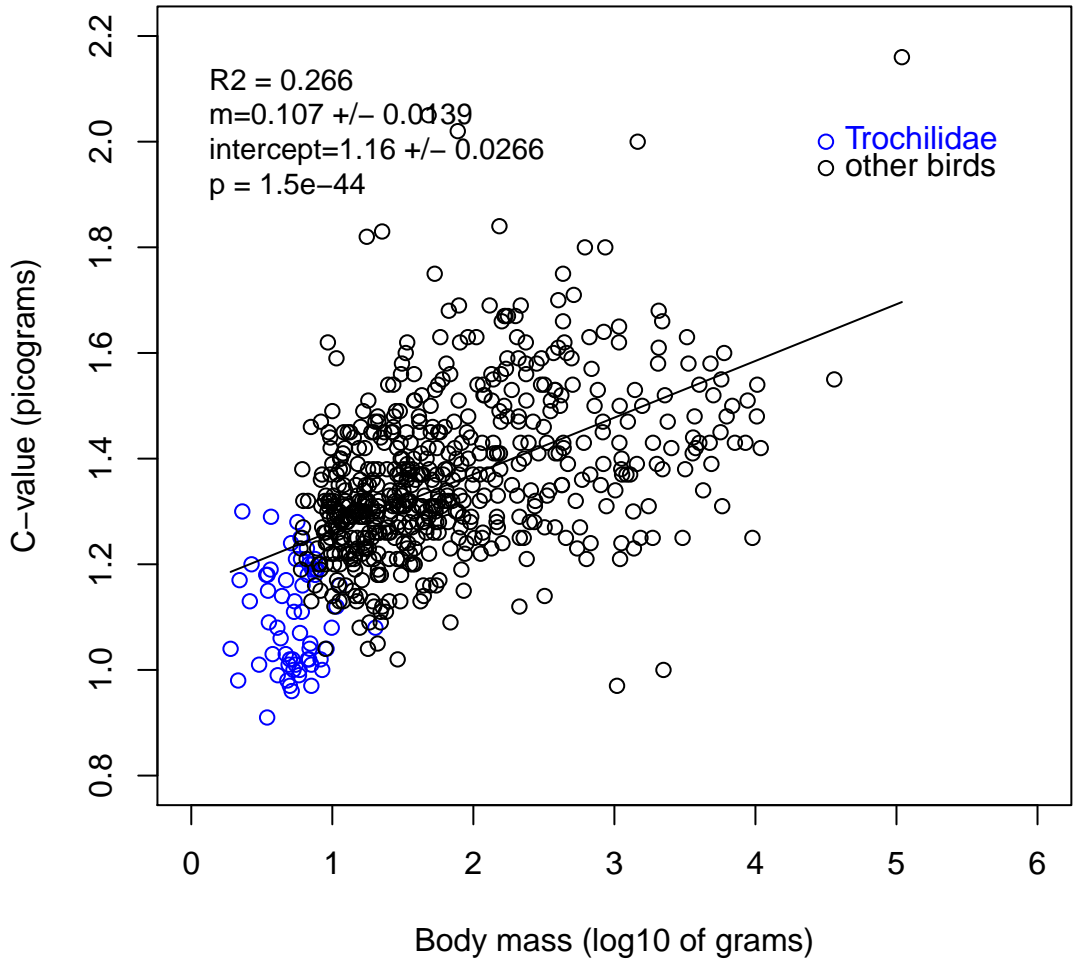
Birds: body mass vs. C-value



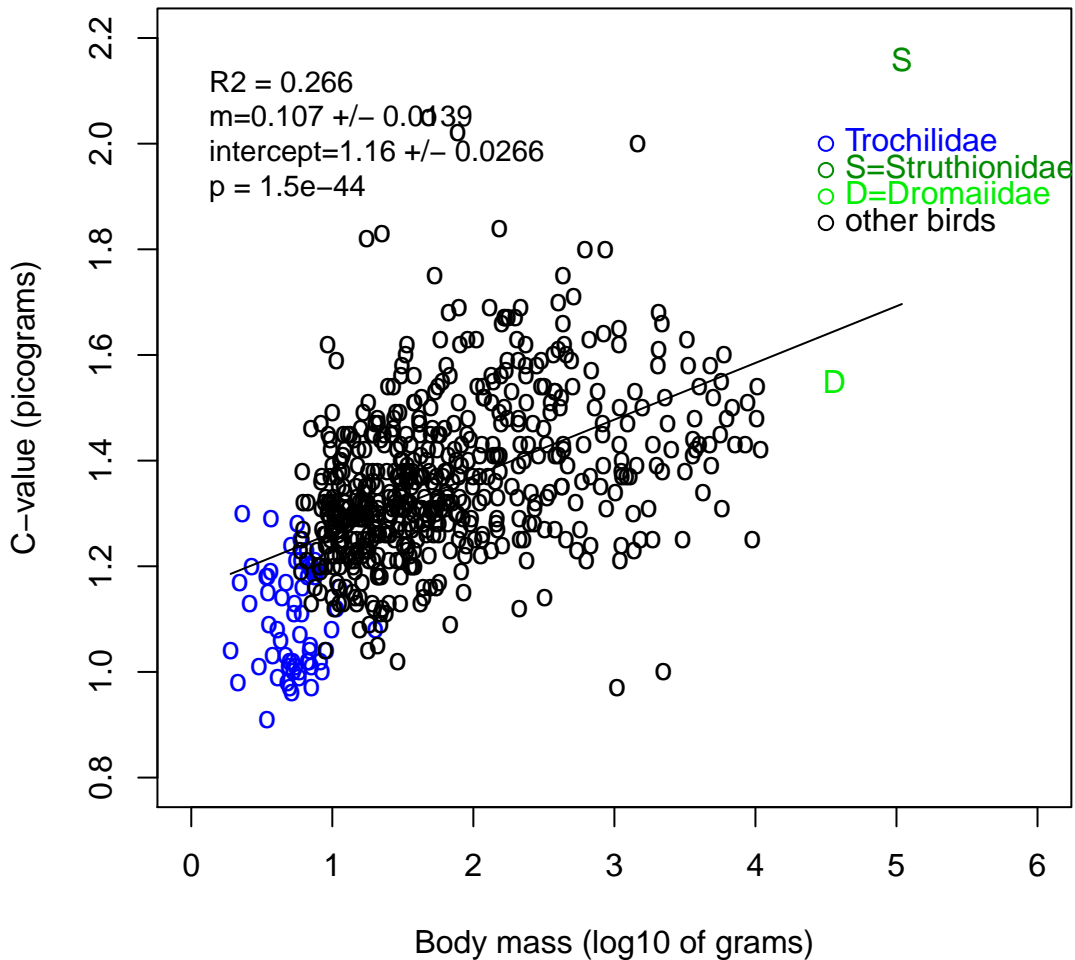
Birds: body mass contrasts vs. C-value contrasts



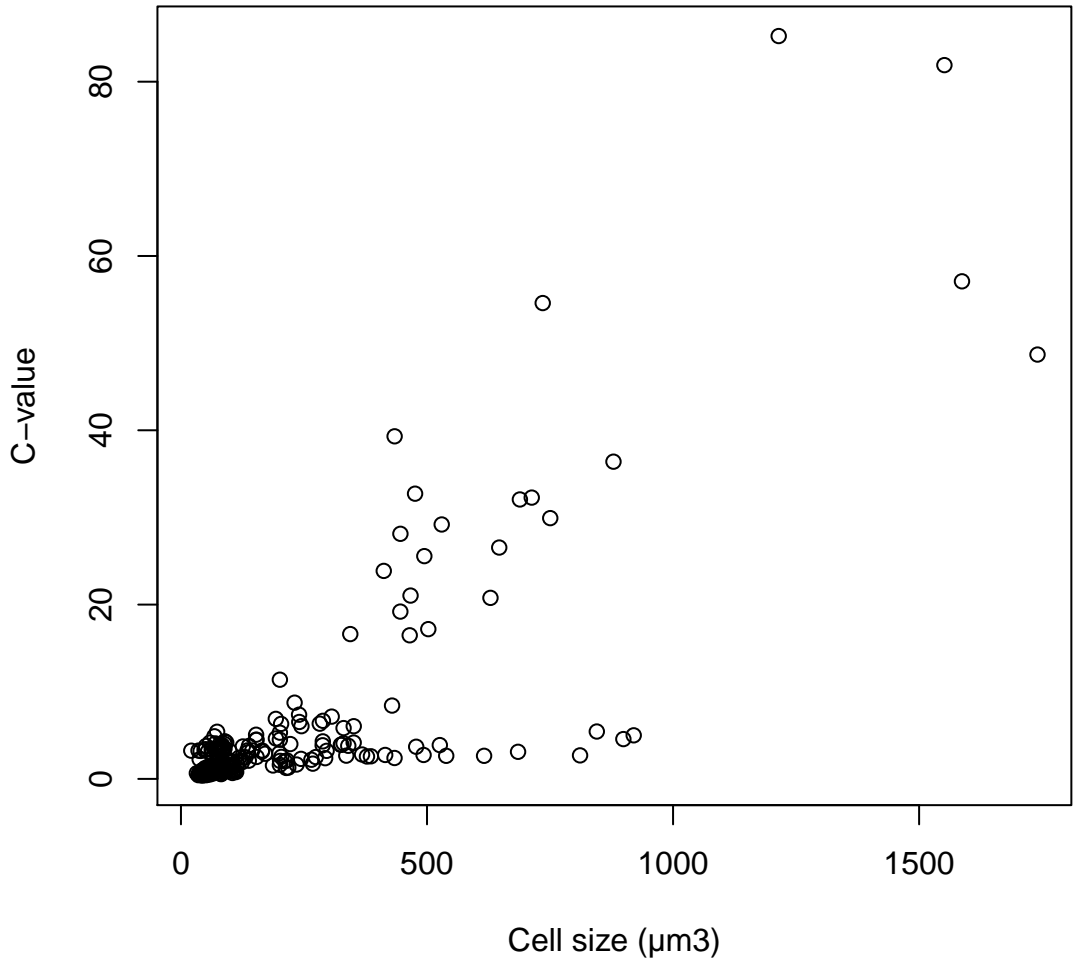
Birds: body mass vs. C-value



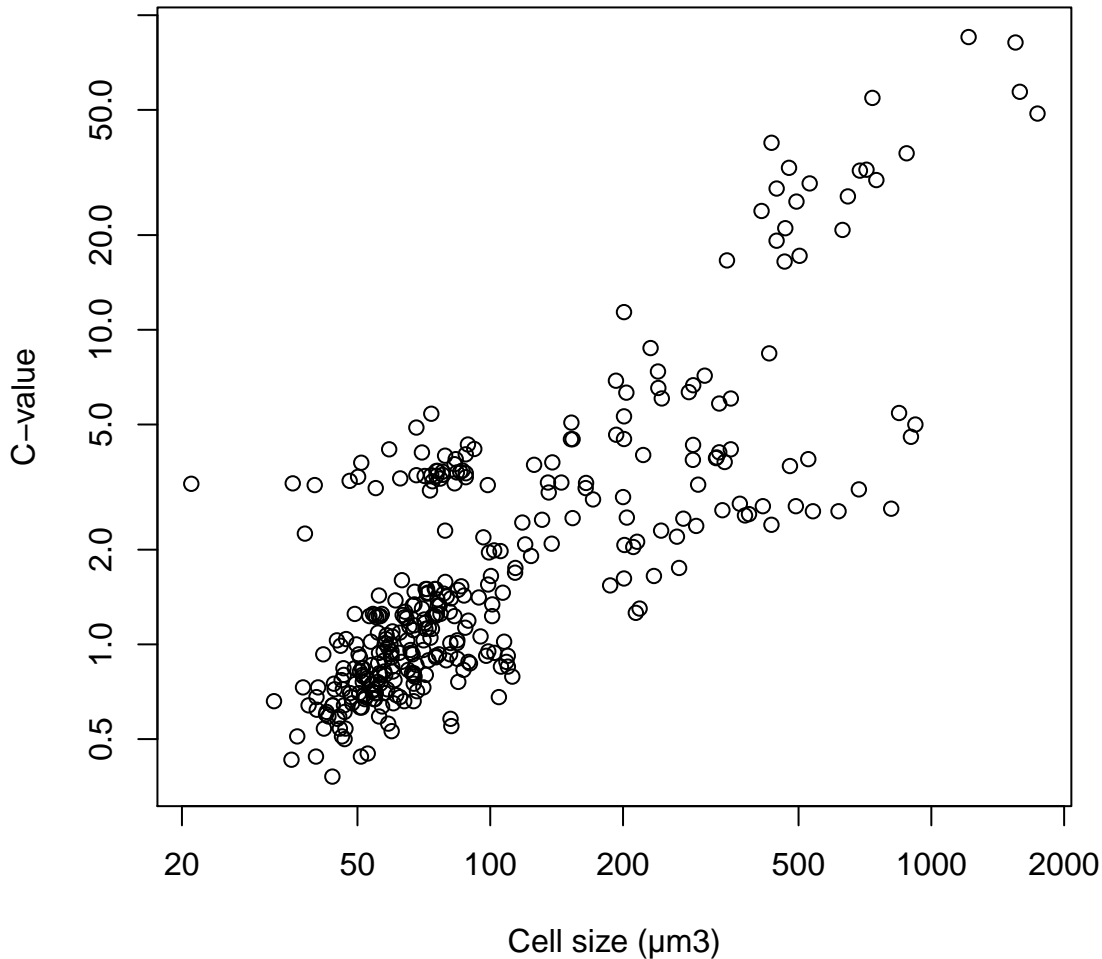
Birds: body mass vs. C-value



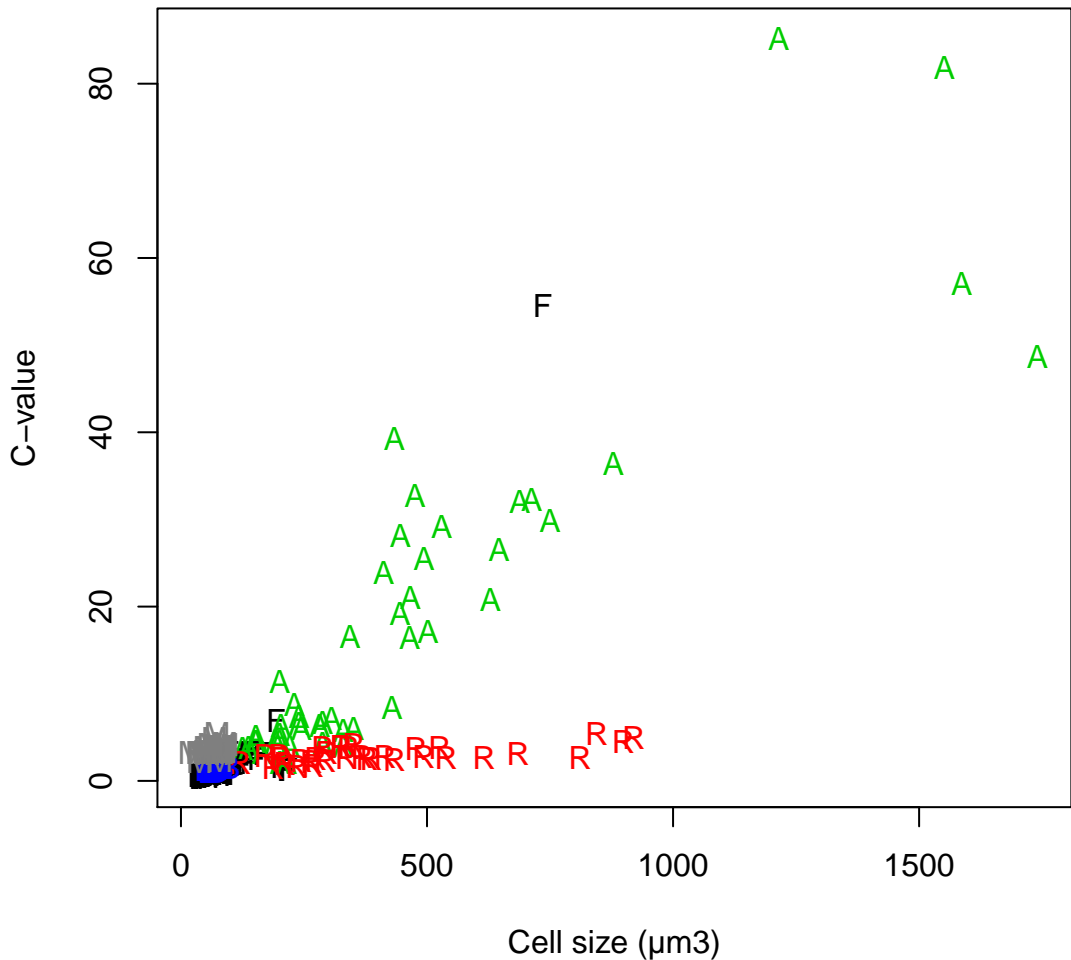
Erythrocyte cell volume vs. C-value



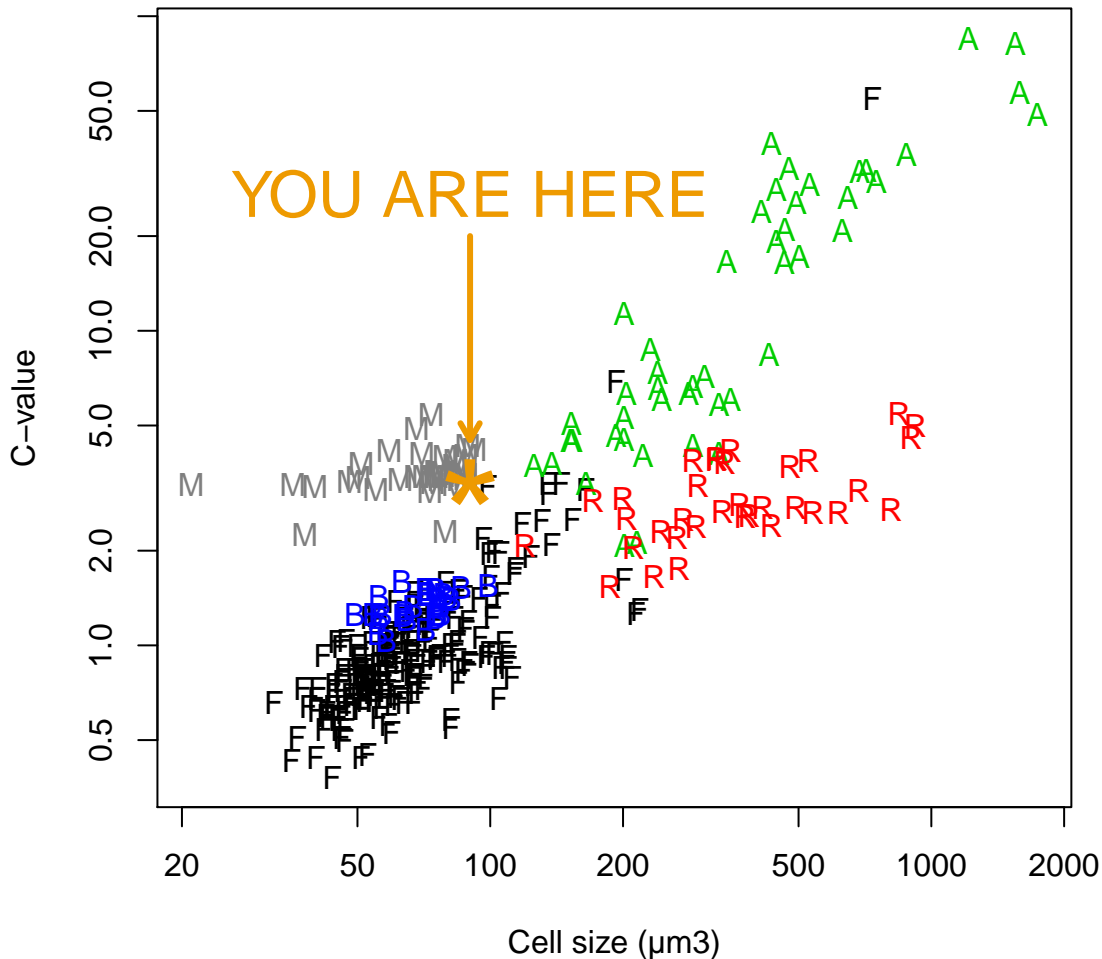
Erythrocyte cell volume vs. C-value (axes logged)



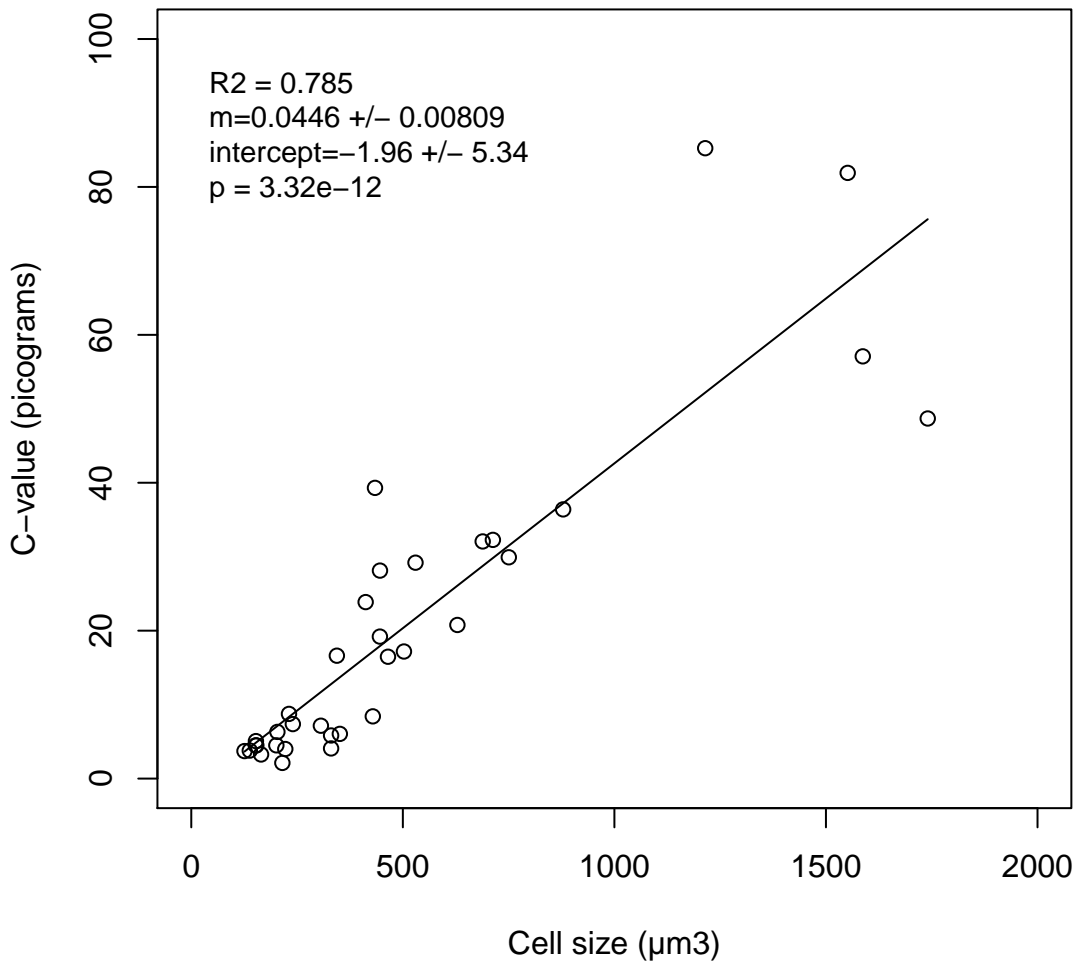
Erythrocyte cell volume vs. C-value



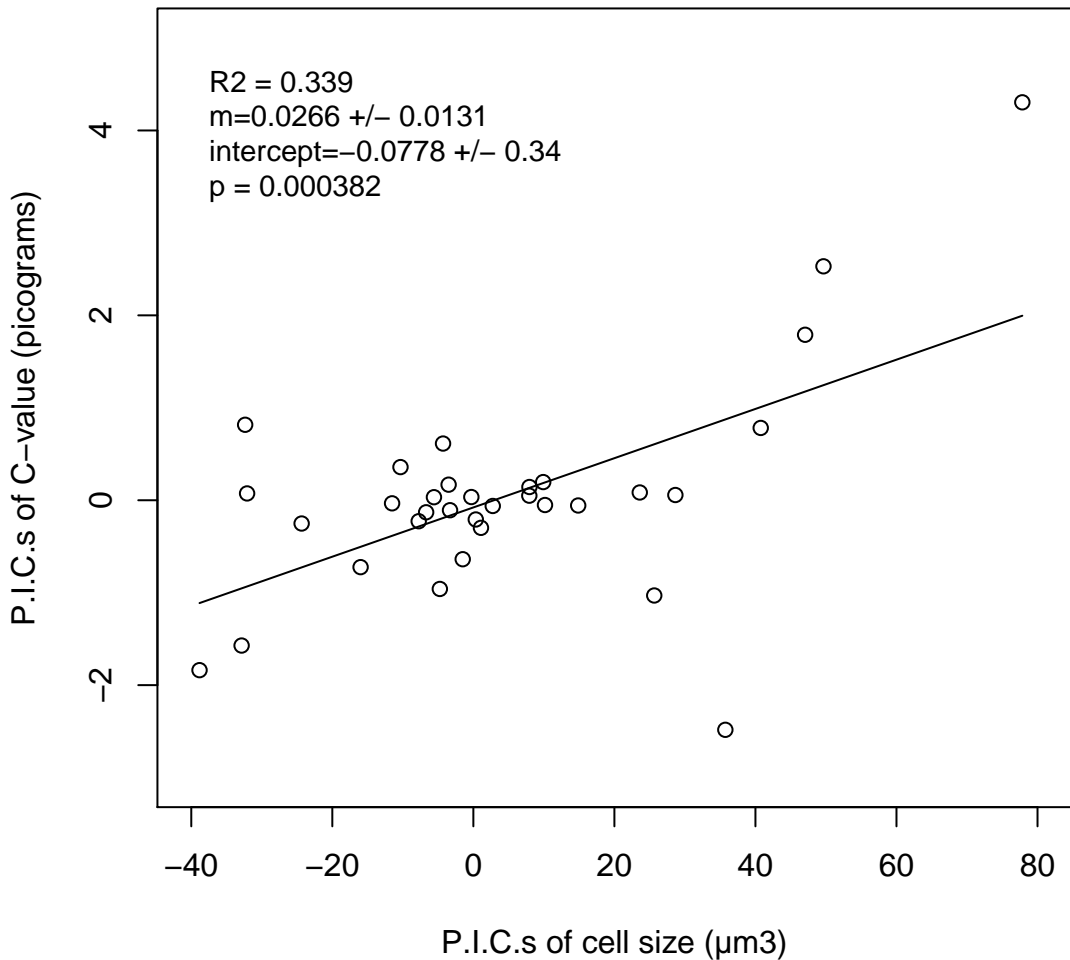
Erythrocyte cell volume vs. C-value (axes logged)



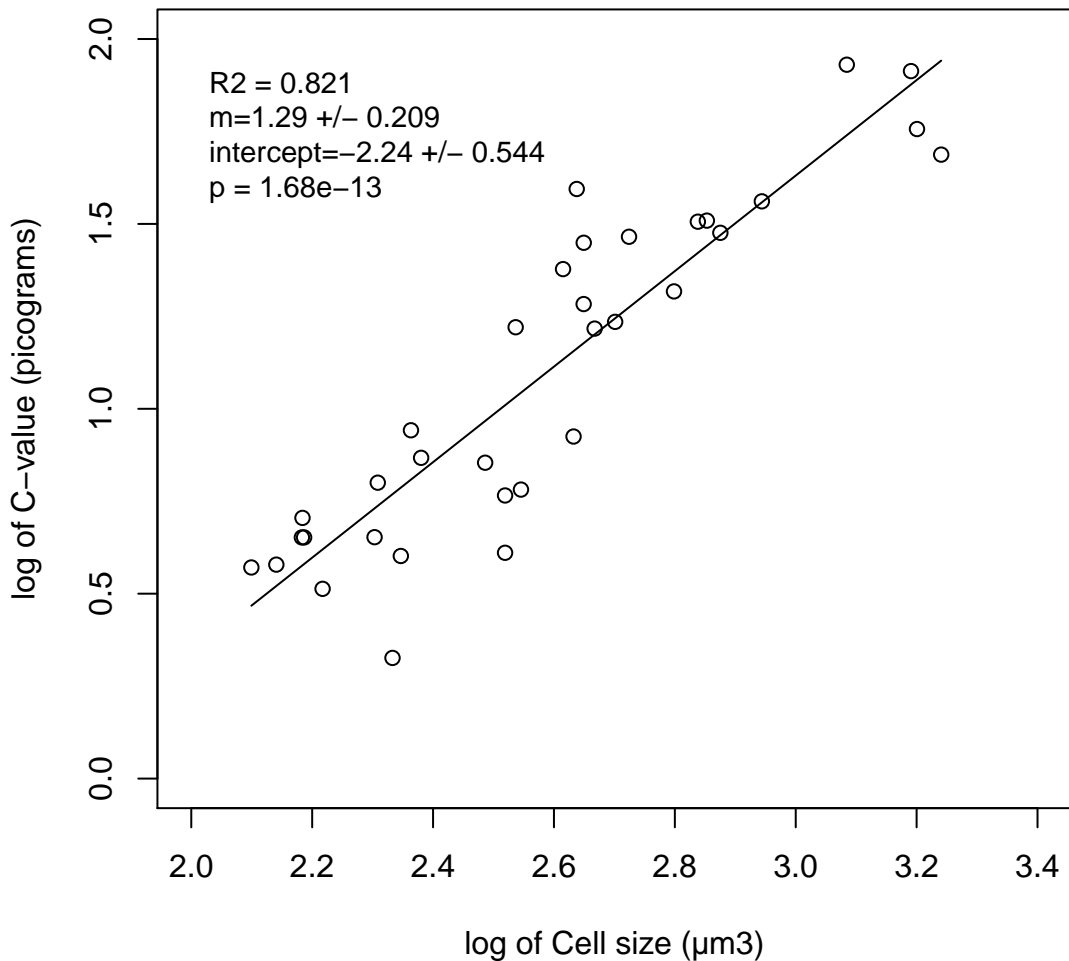
Amphibians: cell size vs. C-value



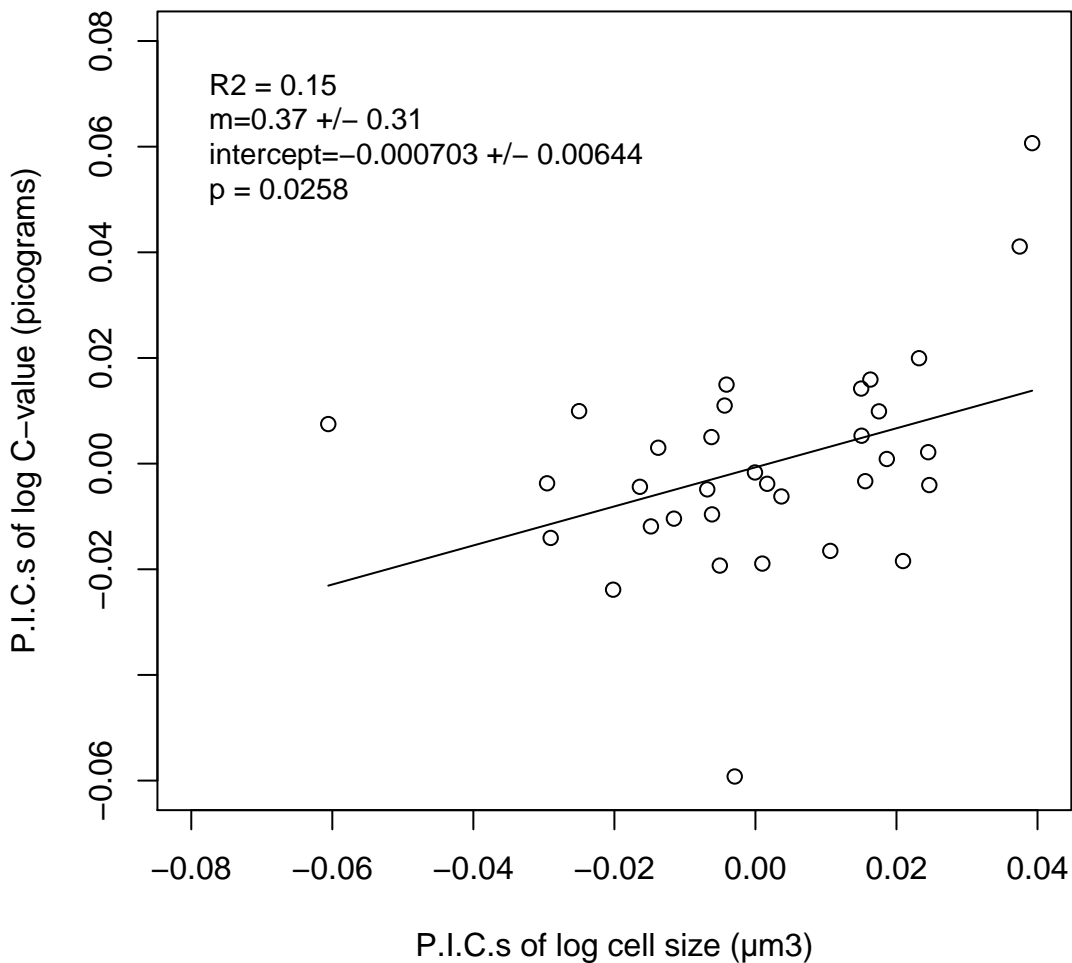
Amphibians: cell-size contrasts vs. C-value contrasts



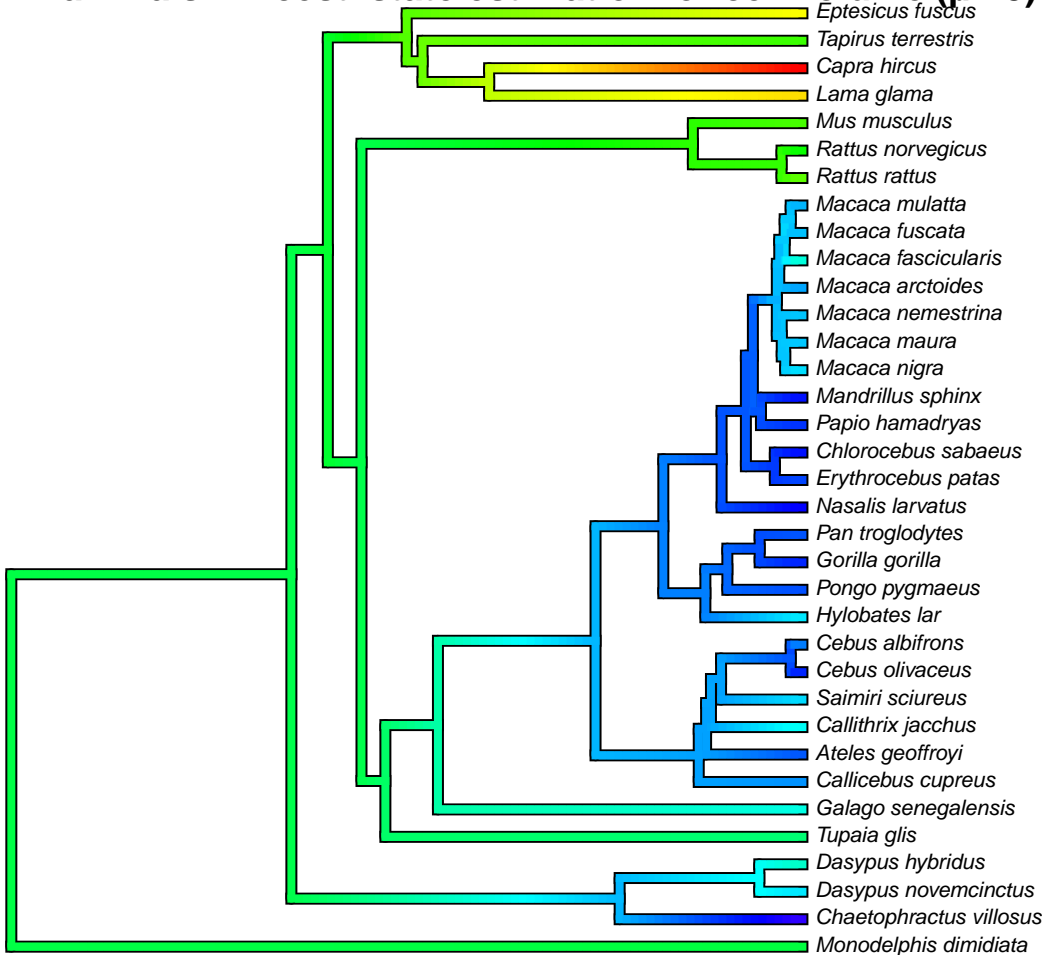
Amphibians: log₁₀(cell size) vs. log₁₀(C-value)



Amphibians: log₁₀(cell-size) contrasts vs. log₁₀(C-value) contrasts



Mammals: Ancest. state estimation for cell volume (μm^3)

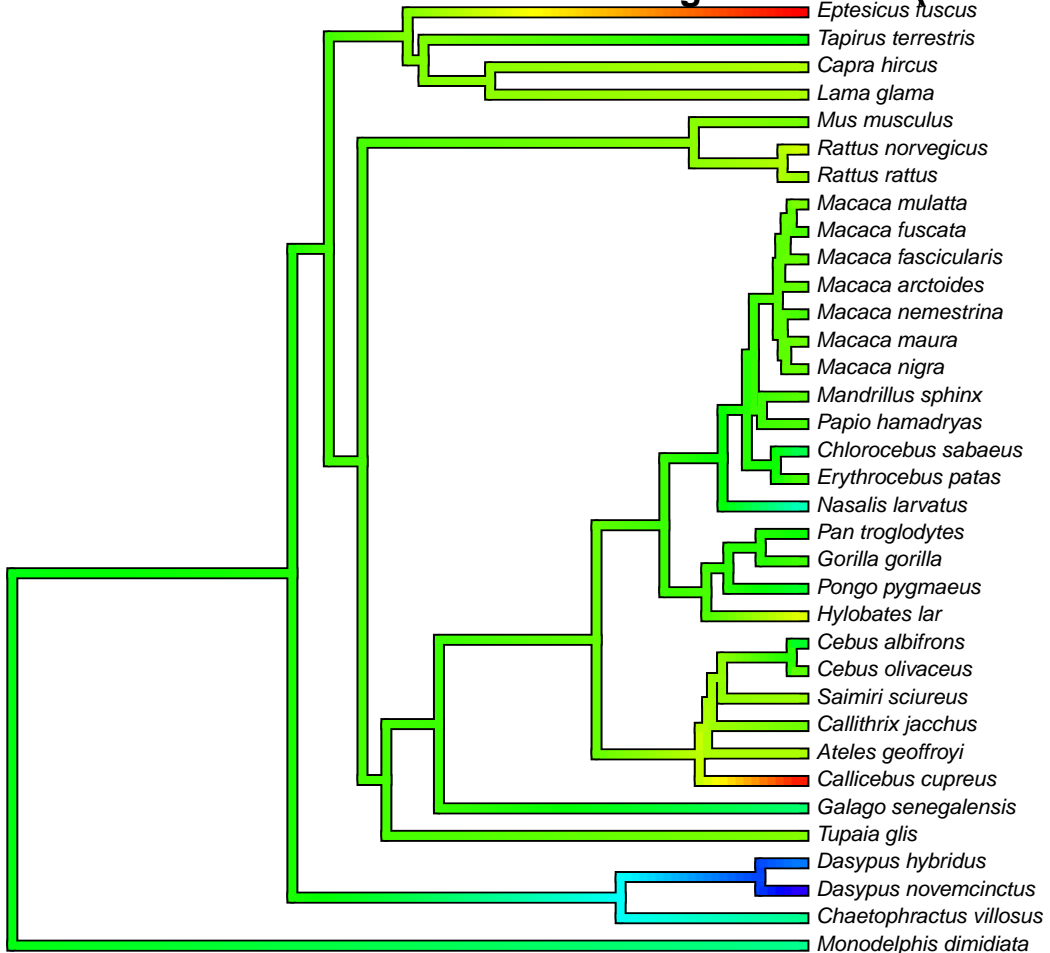


21 Cell volume (μm^3) 92

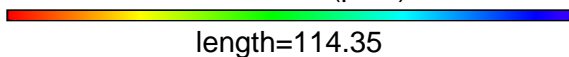


length=114.35

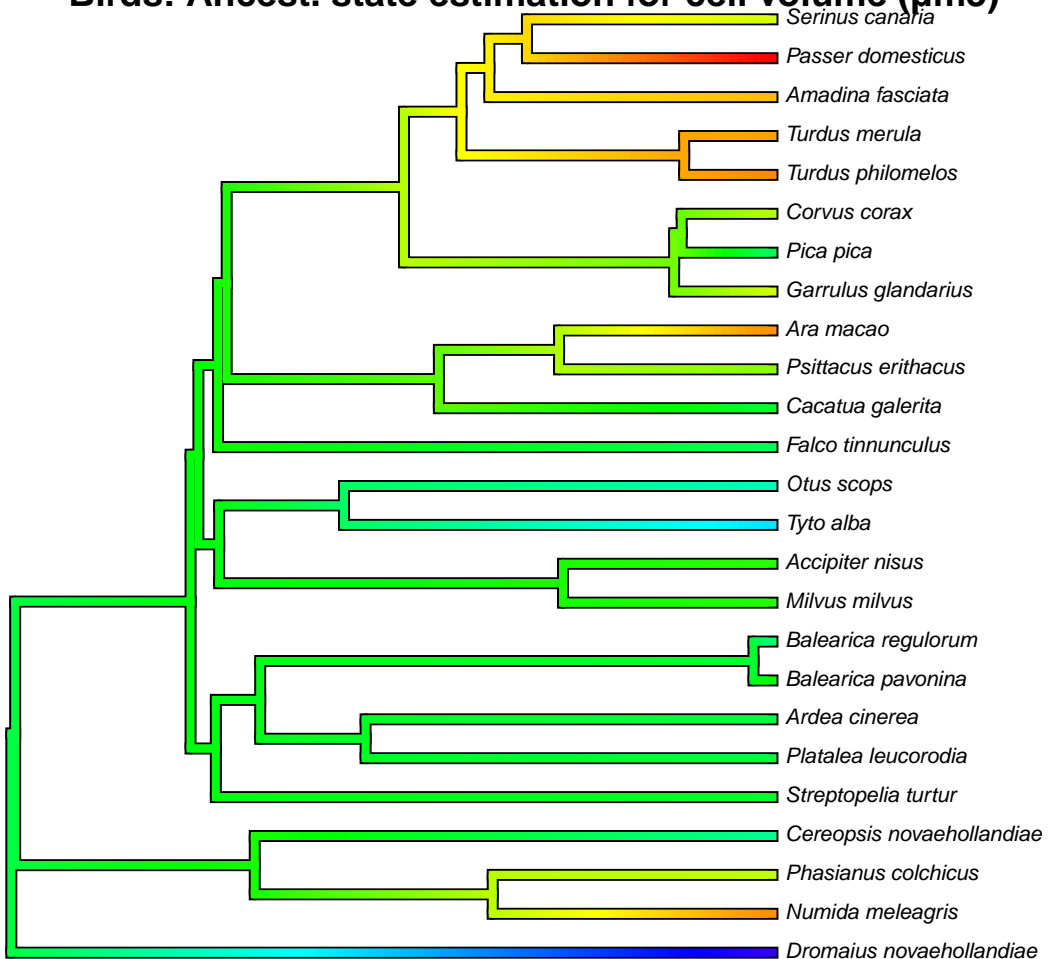
Mammals: Ancestral state estimation for genome size (C-value)



2.25 Cell volume (μm^3) 5.41



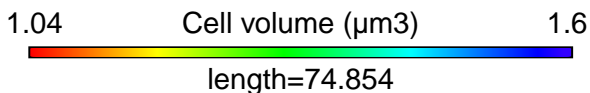
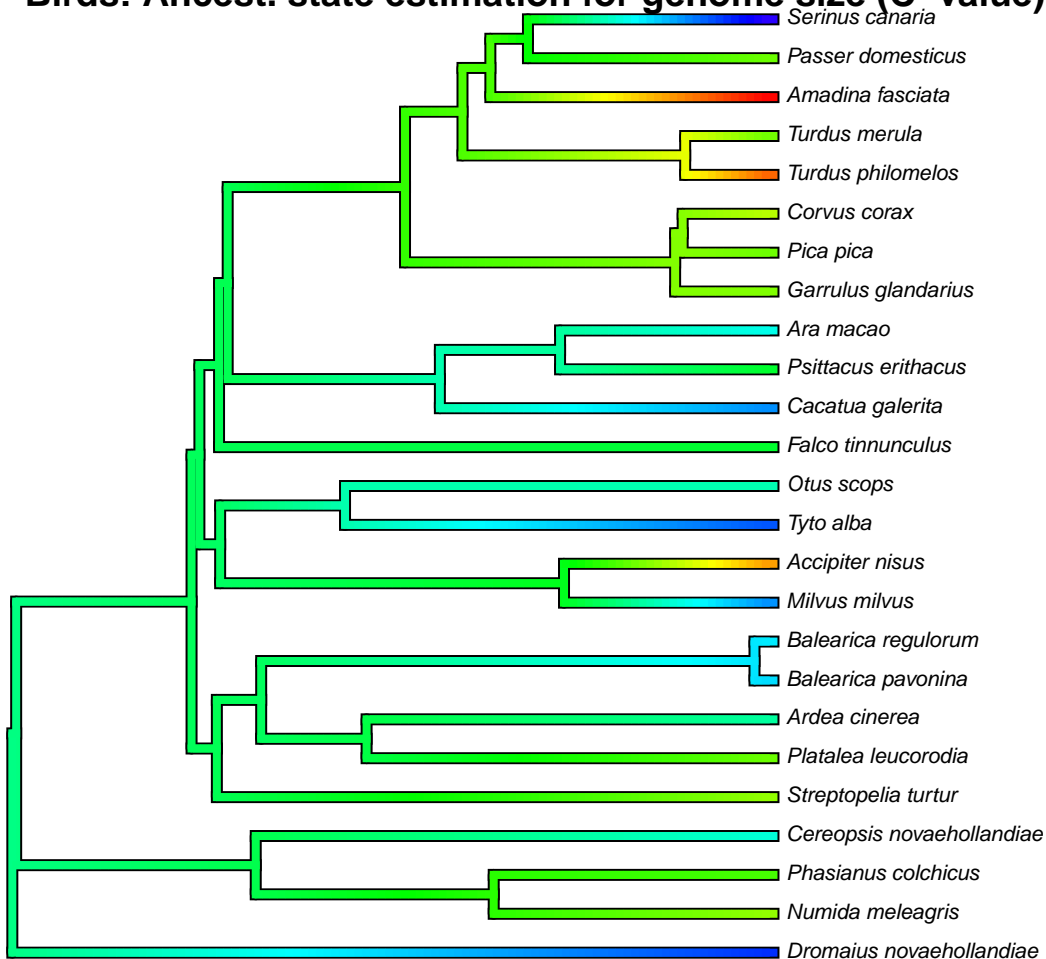
Birds: Ancestral state estimation for cell volume (μm^3)



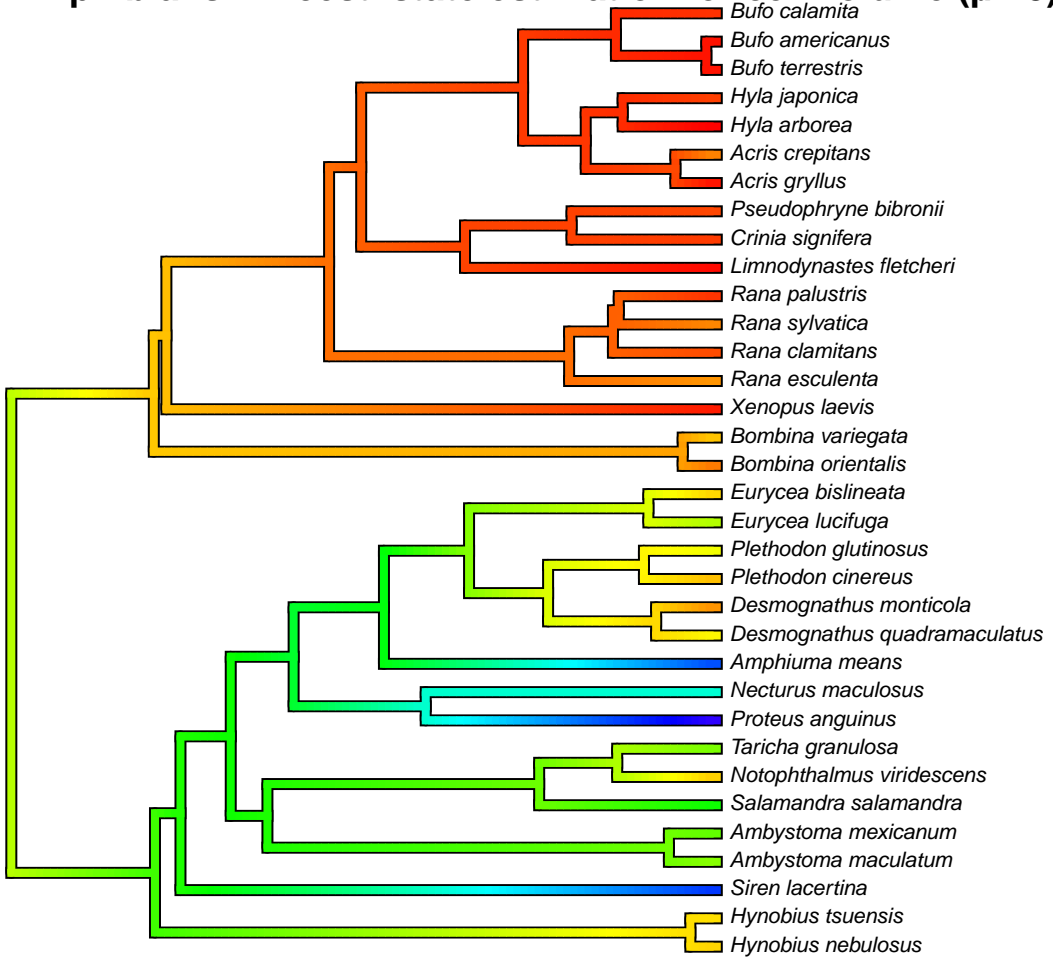
49.3 Cell volume (μm^3) 98.92

length=74.854

Birds: Ancestral state estimation for genome size (C-value)



Amphibians: Ancest. state estimation for cell volume (μm^3)



125.71 Cell volume (μm^3) 1740.56

length=183.774

Amphibians: Ancestral state estimation for genome size (C-value)

